

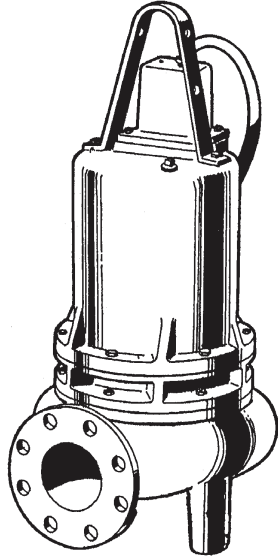
Series 4SE-L

3" Spherical Solids Handling

BARNES®

www.cranepumps.com

4" Horizontal Discharge - Submersible Non-Clog Pumps



**Series: 4SE-L 4.5 - 15HP,
1750RPM, 60Hz**



Sample Specifications: Section 1 Page 16.

DESCRIPTION:

SUBMERSIBLE NON-CLOG SEWAGE PUMP
DESIGNED FOR TYPICAL RAW SEWAGE
APPLICATIONS

DISCHARGE 4" 125lb., Flange Horizontal
LIQUID TEMPERATURE 104°F (40°C) Continuous
VOLUTE Cast Iron ASTM A-48, Class 30
MOTOR HOUSING Cast Iron ASTM A-48, Class 30
SEAL PLATE Cast Iron ASTM A-48, Class 30
IMPELLER:
Design 2 Vane, Open with pump out vanes on back side, Dynamically Balanced, ISO G6.3
Material Cast Iron ASTM A-48, Class 30
SHAFT 416 Stainless Steel
SQUARE RINGS Buna-N
DIAPHRAGM Buna-N
HARDWARE 300 Series Stainless Steel
LIFTING BAIL 304 Stainless Steel
PAINT Air Dry Enamel (Epoxy Optional)
SEAL:
Design Double Mechanical, Oil filled pressure equalized reservoir
Material Carbon/Ceramic/Buna-N
Hardware - 300 Series Stainless
CORD ENTRY 40 ft. (12.1 m) Cord. Epoxy Sealed Housing with secondary pressure grommet for sealing and strain relief
SPEED 1750 RPM (Nominal)
BEARINGS:
Upper Single Row, Ball, Oil Lubricated
Load Radial
Lower Single Row, Ball, Oil Lubricated
Load Radial
Life 50,000 HR L10 Design
MOTOR:
Design NEMA L- Single Phase, NEMA B - Three Phase
Torque Curve, Oil Filled, Squirrel Cage Induction
Winding Class F, Class H rated Magnet Wire
Service Factor 1.15
SINGLE PHASE Capacitor Start/Capacitor Run. Requires Barnes Starter/Panel which includes capacitors and overload protection
THREE PHASE Dual Voltage motor 230/460/575. Requires Overload Protection to be included in Control Panel, VFD Suitable
MOISTURE SENSOR Normally Open (N/O), Requires relay in control panel
TEMPERATURE SENSOR .. Normally Closed (N/C), Requires relay in control panel.
OPTIONAL EQUIPMENT Seal Material, Impeller Trims, Additional Cord, Epoxy Paint

RECOMMENDED:

Accessories Break Away Fitting (BAF)
Check Valve
Control Panel
Seal Kit PN 130179
Service Kit PN 130175

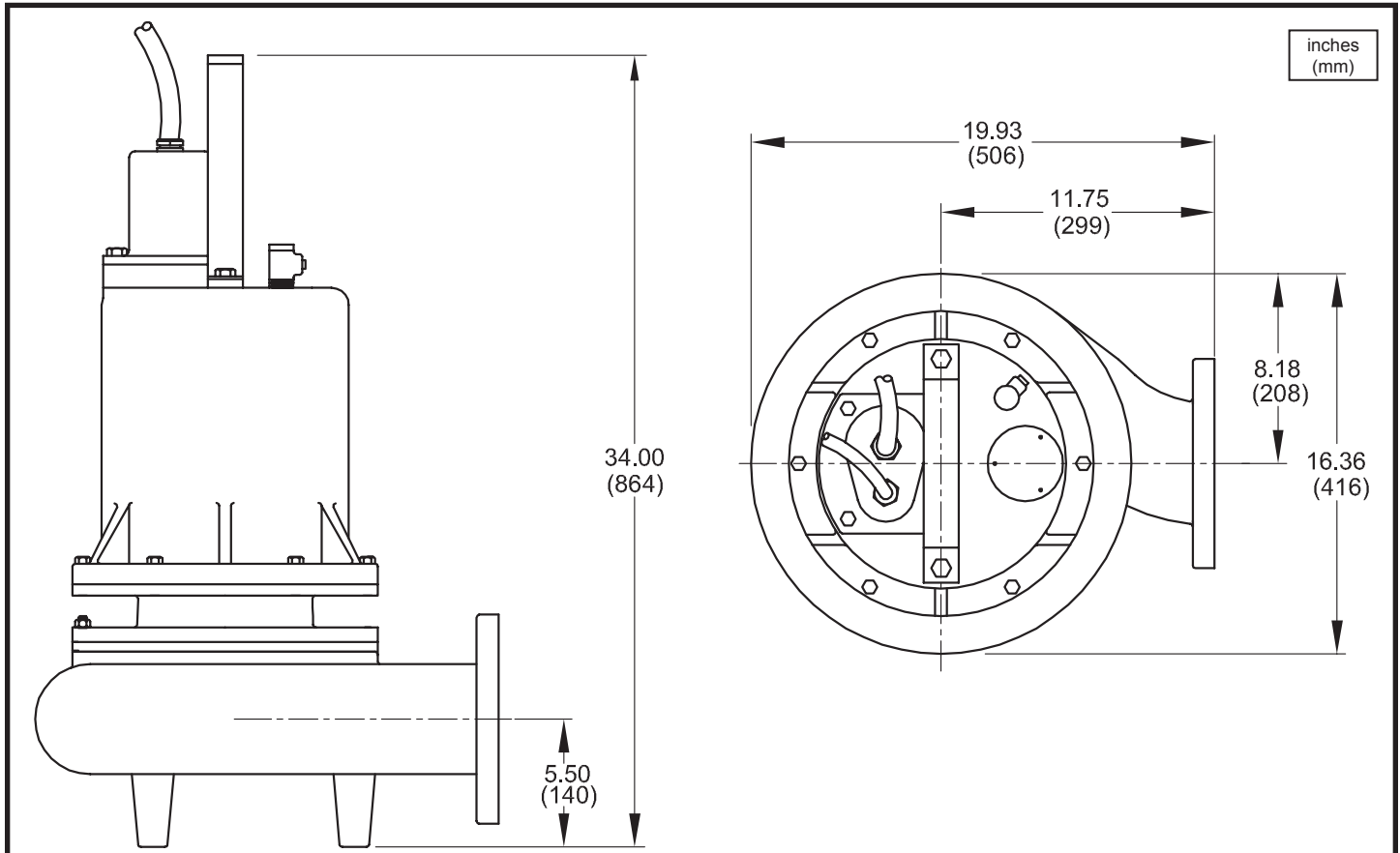
SECTION 1D
PAGE 18
DATE 6/13

CRANE
A Crane Co. Company

PUMPS & SYSTEMS

USA: (937) 778-8947 • Canada: (905) 457-6223 • International: (937) 615-3598

4" Horizontal Discharge - Submersible Non-Clog Pumps



| MODEL NO | PART NO | HP | VOLT/PH | Hz | RPM (Nom) | NEMA START CODE | FULL LOAD AMPS | LOCKED ROTOR AMPS | CORD SIZE | CORD TYPE | CORD O.D inch (mm) |
|-----------|---------|------|---------|----|-----------|-----------------|----------------|-------------------|-----------|-----------|--------------------|
| 4SE4524L | 084623 | 4.5 | 230/1 | 60 | 1750 | A | 26.0 | 59.0 | 10/4 | SOW | 0.750 (19.1) |
| 4SE4564L | 084624 | 4.5 | 200/3 | 60 | 1750 | C | 20.9 | 48.6 | 10/4 | SOW | 0.750 (19.1) |
| 4SE4534L | 084625 | 4.5 | 230/3 | 60 | 1750 | E | 18.2 | 56.0 | 10/4 | SOW | 0.750 (19.1) |
| 4SE4544L | 084626 | 4.5 | 460/3 | 60 | 1750 | E | 9.1 | 28.0 | 10/4 | SOW | 0.750 (19.1) |
| 4SE4554L | 089306 | 4.5 | 575/3 | 60 | 1750 | E | 7.2 | 22.4 | 10/4 | SOW | 0.750 (19.1) |
| 4SE7524L | 084627 | 7.5 | 230/1 | 60 | 1750 | A | 39.0 | 96.0 | 6/4 | SOW | 1.06 (27) |
| 4SE7564L | 084628 | 7.5 | 200/3 | 60 | 1750 | B | 30.8 | 69.5 | 8/4 | SOW | 0.830 (21) |
| 4SE7534L | 084629 | 7.5 | 230/3 | 60 | 1750 | D | 26.8 | 80.0 | 8/4 | SOW | 0.830 (21) |
| 4SE7544L | 084630 | 7.5 | 460/3 | 60 | 1750 | D | 13.4 | 40.0 | 8/4 | SOW | 0.830 (21) |
| 4SE7554L | 089307 | 7.5 | 575/3 | 60 | 1750 | D | 10.7 | 32.0 | 10/4 | SOW | 0.750 (19.1) |
| 4SE11364L | 084631 | 11.3 | 200/3 | 60 | 1750 | B | 32.2 | 109.5 | 8/4 | SOW | 0.830 (21) |
| 4SE11334L | 084632 | 11.3 | 230/3 | 60 | 1750 | D | 28.0 | 126.0 | 8/4 | SOW | 0.830 (21) |
| 4SE11344L | 084633 | 11.3 | 460/3 | 60 | 1750 | D | 14.0 | 63.0 | 8/4 | SOW | 0.830 (21) |
| 4SE11354L | 089308 | 11.3 | 575/3 | 60 | 1750 | D | 11.2 | 50.4 | 10/4 | SOW | 0.750 (19.1) |
| 4SE15034L | 084634 | 15.0 | 230/3 | 60 | 1750 | D | 38.0 | 160.0 | 6/4 | SOW | 1.06 (27) |
| 4SE15044L | 084635 | 15.0 | 460/3 | 60 | 1750 | D | 19.0 | 80.0 | 6/4 | SOW | 1.06 (27) |
| 4SE15054L | 089309 | 15.0 | 575/3 | 60 | 1750 | D | 15.2 | 64.0 | 8/4 | SOW | 0.830 (21) |

Moisture/Temperature sensor cord for all phase models is 18/5 SOW, 0.476 (12.1mm) O.D.

IMPORTANT !

- 1.) PUMP MAY BE OPERATED "DRY" FOR EXTENDED PERIODS WITHOUT DAMAGE TO MOTOR AND/OR SEALS.
- 2.) INSTALLATIONS SUCH AS DECORATIVE FOUNTAINS OR WATER FEATURES PROVIDED FOR VISUAL ENJOYMENT MUST BE INSTALLED IN ACCORDANCE WITH THE NATIONAL ELECTRIC CODE ANSI/NFPA 70 AND/OR THE AUTHORITY HAVING JURISDICTION. THIS PUMP IS NOT INTENDED FOR USE IN SWIMMING POOLS, RECREATIONAL WATER PARKS, OR INSTALLATIONS IN WHICH HUMAN CONTACT WITH PUMPED MEDIA IS A COMMON OCCURRENCE.

Series 4SE -L

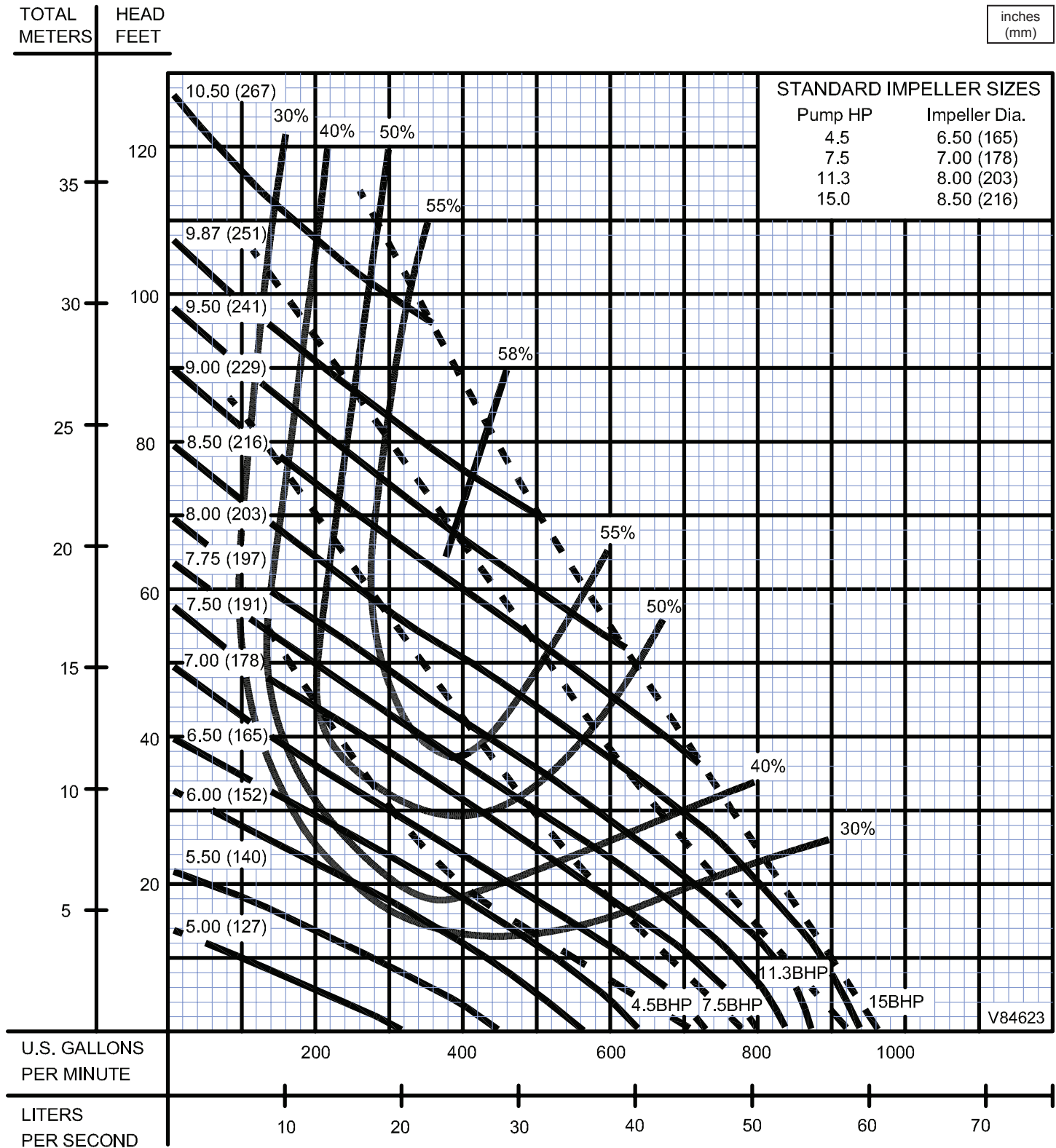
Performance Curve

4.5, 7.5, 11.3 & 15HP, 1750RPM, 60Hz

BARNES®

www.cranepumps.com

4" Horizontal Discharge - Submersible Non-Clog Pumps



Testing is performed with water, specific gravity 1.0 @ 68° F @ (20°C), other fluids may vary performance

SECTION 1D
 PAGE 20
 DATE 1/05



A Crane Co. Company

PUMPS & SYSTEMS

USA: (937) 778-8947 • Canada: (905) 457-6223 • International: (937) 615-3598